

# BALL CHECK VALVE

## Ref. 336/337

Ref. : DS 336

Rev. : 5

Date : 02/08

Page 1/1



90 rue du ruisseau 38297 ST QUENTIN FALLAVIER  
Tel: (33)04.74.94.15.90 Fax: (33)04.74.95.62.08  
E.mail : sferaco@sferaco.fr

### SPECIFICATIONS :

- . Ball check type
- . Flanged GN10/16
- . Cast iron
- . Epoxy blue RAL 5017 painting

### USE :

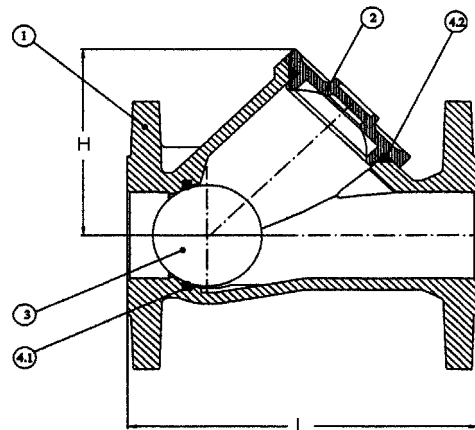
- . Water distribution and watering
- . Max. Temperature Ts : 10°C to 70°C
- . Max. pressure Ps : 10 bars

### RANGE :

- . Flanged GN16 Ref. 336 DN 40 to DN 150 / GN10 over
- . Flanged GN16 with strainer Ref. 337 DN 50 to DN 250

### MATERIALS :

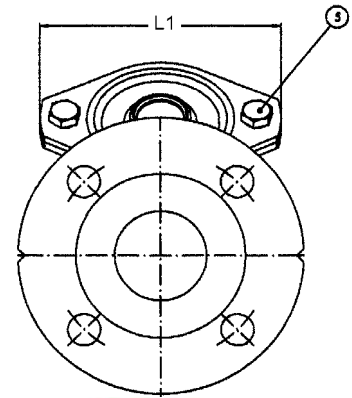
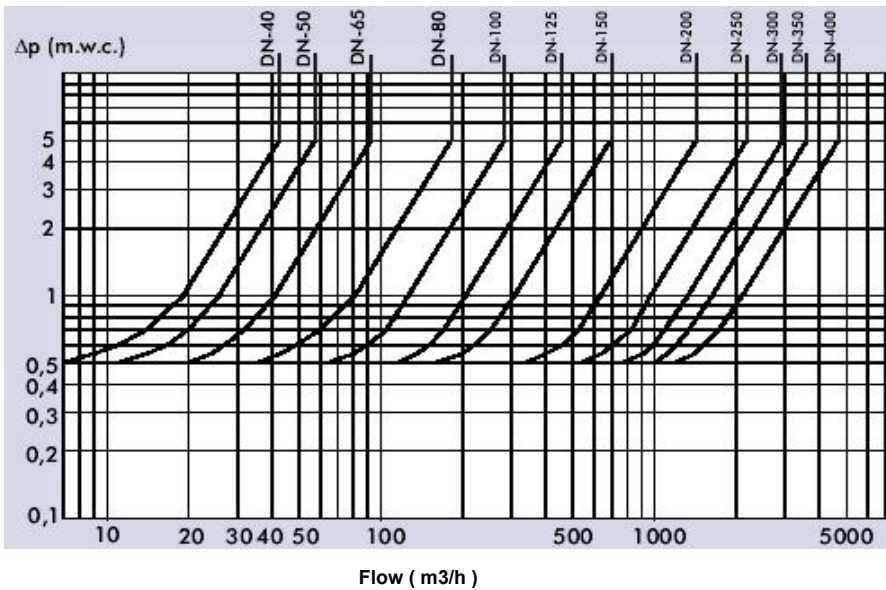
| N°  | DESIGNATION         | MATERIALS             |
|-----|---------------------|-----------------------|
| 1   | Body                | Cast iron GG25        |
| 2   | Bonnet              | Cast iron GG25        |
| 3   | Ball DN40           | Phenolic Resin        |
| 3   | Ball DN50 to DN250  | Aluminium + NBR       |
| 3   | Ball DN300 to DN400 | Cast iron GGG40 + NBR |
| 3   | Ball DN500          | Solid Polyurethane    |
| 4.1 | Seat                | NBR                   |
| 4.2 | Gasket              | NBR                   |
| 5   | Bolt                | Stainless steel       |



### SIZE :

|          | DN    | 40  | 50  | 65   | 80  | 100 | 125 | 150 | 200 | 250 | 300 | 350 | 400 |
|----------|-------|-----|-----|------|-----|-----|-----|-----|-----|-----|-----|-----|-----|
| Ref. 336 | L     | 180 | 200 | 240  | 260 | 300 | 350 | 400 | 500 | 600 | 700 | 800 | 900 |
|          | H     | 90  | 115 | 135  | 160 | 190 | 222 | 268 | 335 | 420 | 495 | 580 | 730 |
|          | L1    | 120 | 140 | 155  | 185 | 220 | 255 | 290 | 370 | 380 | 445 | 520 | 712 |
|          | Weig. | 8,2 | 9,4 | 12,5 | 15  | 20  | 30  | 38  | 70  | 125 | 180 | 290 | 420 |

### HEAD LOSS



Ref. 337 with steel strainer

( Size strainer  
see data sheet DS366 )

### STANDARDS :

- . DIRECTIVE 97/23/CE : Products excluded from directive (Article 1, § 3.2)

ADVICE : Our opinion and our advice are not guaranteed and SFERACO shall not be liable for the consequences of damages. The customer must check the right choice of the products with the real service conditions.