

BALL CHECK VALVE

Ref. 335

Ref. : DS 335

Rev. : 4

Date : 12/07

Page 1/1



Valves and fittings

90 rue du ruisseau 38297 ST QUENTIN FALLAVIER
Tel : (33)04.74.94.15.90 Fax : (33)04.74.95.62.08
E.mail : sferaco@sferaco.fr

SPECIFICATIONS :

- . Ball check type
- . Female/female
- . Cast iron
- . With removable cap
- . Epoxy blue RAL 5017 painting

USE :

- . Water distribution and watering
- . Max. Temperature Ts : 10°C to 70°C
- . Max. pressure Ps : 10 bars

RANGE :

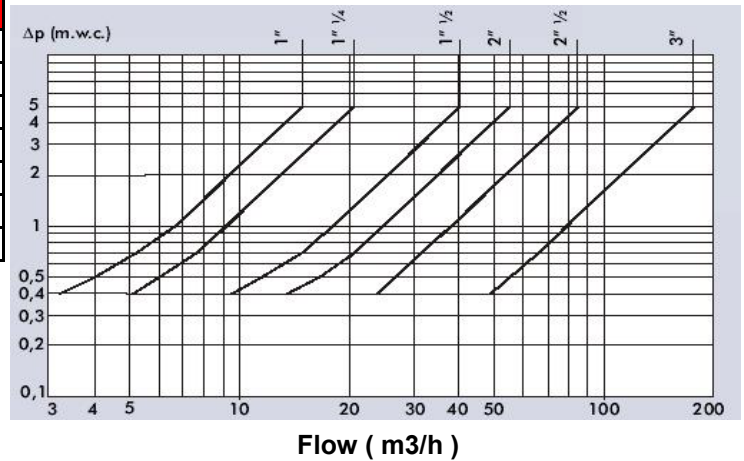
- . Female/Female Ref. 335 1" to 3"



MATERIALS :

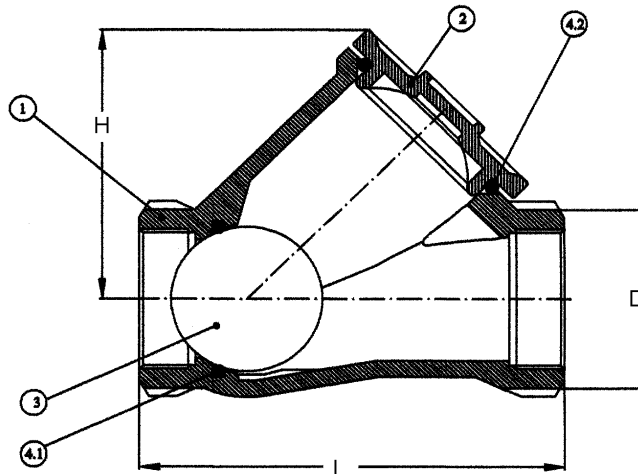
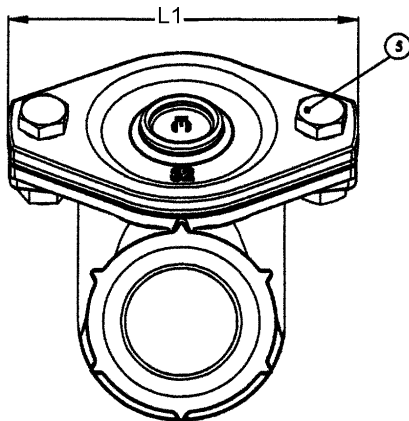
N°	DESIGNATION	MATERIALS
1	Body	Cast iron GG25
2	Bonnet	Cast iron GG25
3	Ball DN 1" to DN 1"1/2	Phenolic Resin
3	Ball DN 2" to DN 3"	Aluminium + NBR
4.1	Seat	NBR
4.2	Gasket	NBR
5	Bolt	Stainless steel

HEAD LOSS :



SIZE :

	DN	1"	1" 1/4	1" 1/2	2"	2" 1/2	3"
Ref. 335	L	141	141	150	175	214	248
	H	85	85	90	115	135	160
	L1	110	110	120	140	155	185
	D	57	57	64	77	95	108
	Weig.	2,2	2,2	2,8	3,9	6,5	8,1



STANDARDS :

. DIRECTIVE 97/23/CE : Products excluded from directive (Article 1, §3.2)

ADVICE : Our opinion and our advice are not guaranteed and SFERACO shall not be liable for the consequences of damages. The customer must check the right choice of the products with the real service conditions.